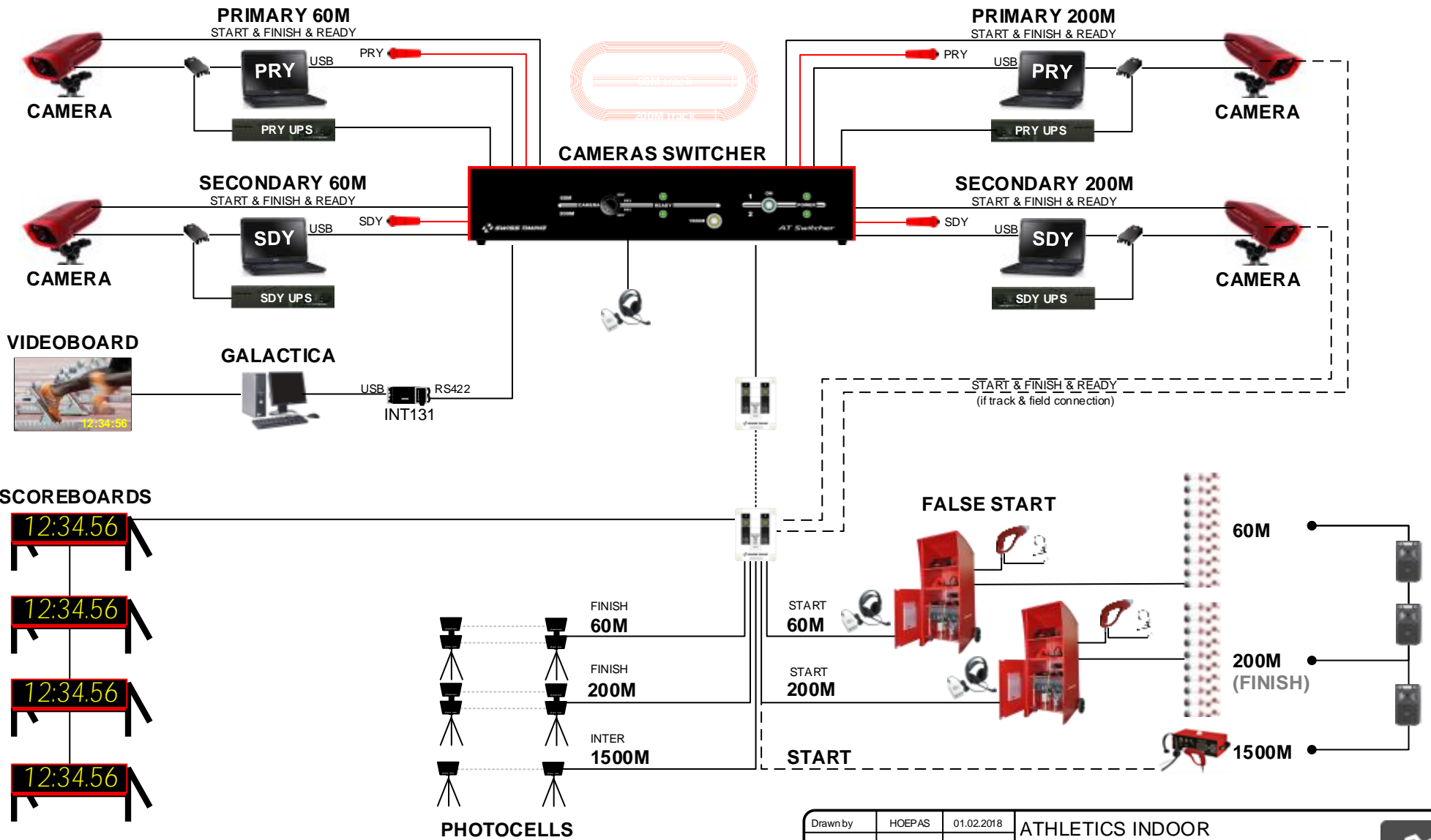



A	B	C	D
---	---	---	---



Drawn by	HOEPAS	01.02.2018	ATHLETICS INDOOR Switcher overview			
Checked by	PROJET	20.03.2018				
Modified by	HOEPAS	18.04.2018				
File Number	0017.551.vsd					
SWISS TIMING			-	0017.551	Rev. A	Page 1 / 7

A	B	C	D
First official version HOEPAS / 18.04.2018	-	-	-

**OSV Myria**



3503.910 OSV Myria 10  
 3503.910.10K OSV Myria 10 Pro  
 3503.916 OSV Myria 16  
 3503.916.10K OSV Myria 16 Pro

---

**OSV Star**



3434.936 OSV Star 2020  
 3434.980 Internal battery  
 9051.6256 Zoom lens 70-300mm  
 9051.6259 Zoom lens 24-85mm  
**START & FINISH & READY**

---

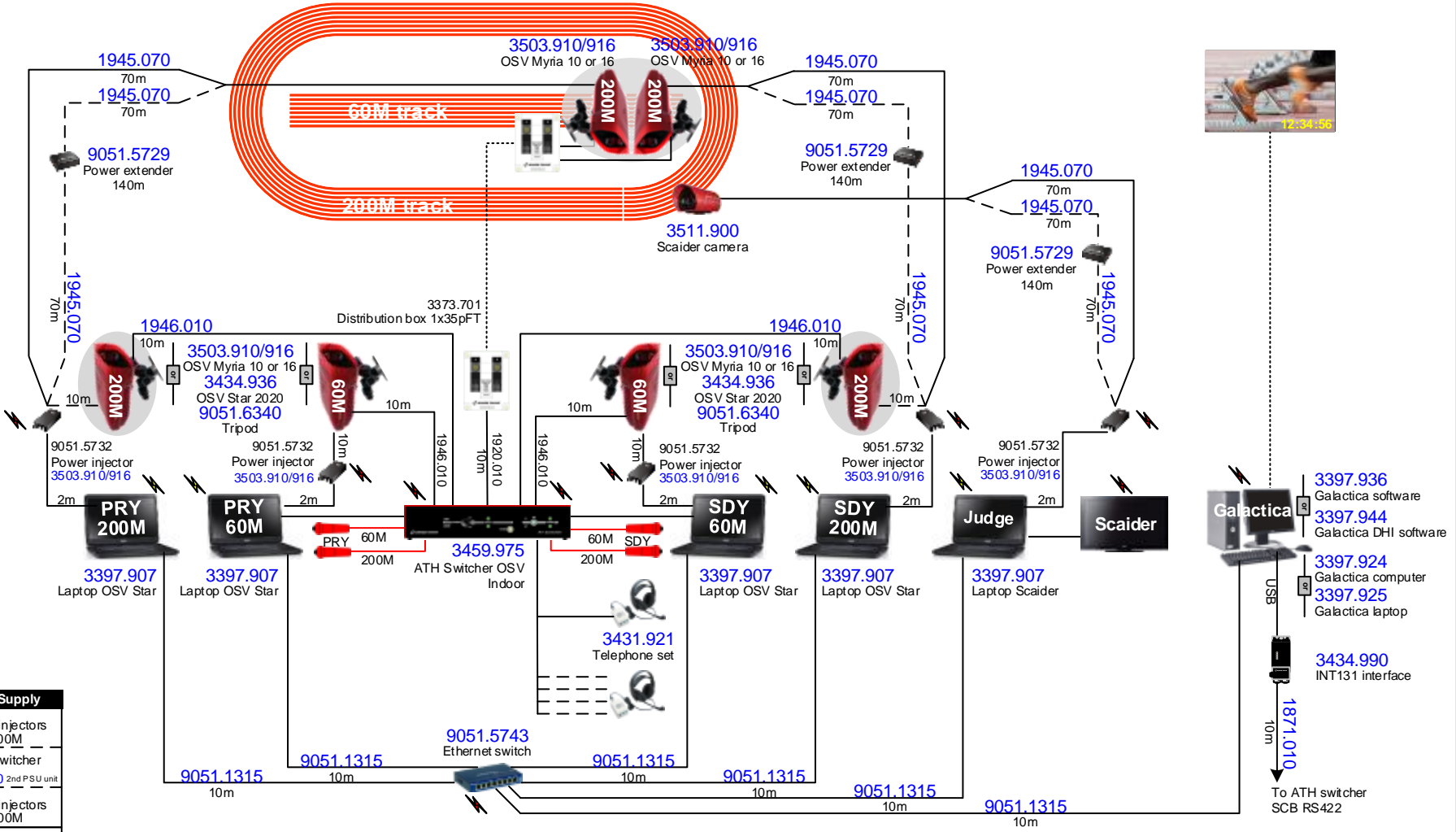
**Pushbutton**



3498.701 OIT5 pushbutton



**UPS : Uninterruptible Power Supply**

- PRY UPS**
  - Myria PRY injectors 60M & 200M
  - ATH switcher
  - 3418.920 2nd PSU unit
- SDY UPS**
  - Myria SDY injectors 60M & 200M
- INF UPS**
  - Scaider injector
  - Ethernet switch



**Switcher : Maximum 2 cameras 200M and 2 cameras 60M**


xxxx.xxx Sales item number  
 (Includes Technical item(s))  
 xxxx.xxx Technical item number  
 (included in Sales item number)

 AC power (115-230VAC) requested  
 (cable provided) UPS recommended  
 Device working on battery  
 AC power (115-230VAC) recommended (cable provided)

— Mobile cable  
 - - - Mobile cable (option)  
 ..... Fix cable

Drawn by	HOEPAS	01.02.2018
Checked by	PROJET	20.03.2018
Modified by	HOEPAS	18.04.2018
File Number	0017.551.vsd	

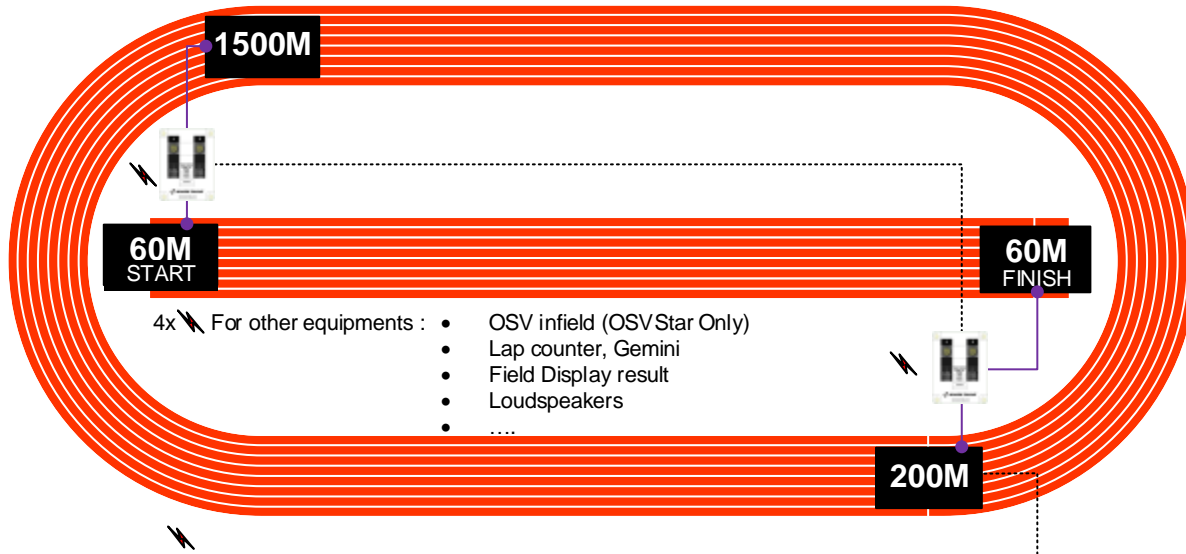
ATHLETICS INDOOR  
High level (switcher)

**TIMING ROOM** 

-	<b>0017.551</b>	Rev. <b>A</b>	Page 2 / 7
---	-----------------	------------------	---------------



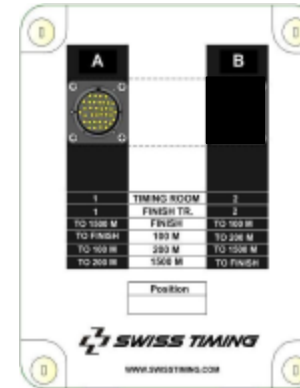
A	First official version HOEPAS / 18.04.2018	C	D
---	---	---	---



- 4x For other equipments :
- OSV infield (OSVStar Only)
  - Lap counter, Gemini
  - Field Display result
  - Loudspeakers
  - ....

**TIMING ROOM**  
200M / 60M START

3373.701



Standard

		Height	Length	Width	Cables
		cm			
H	L W C	25	20	10	10
H		14	20	10	8

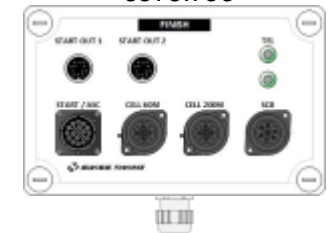
**60M START**

3373.751

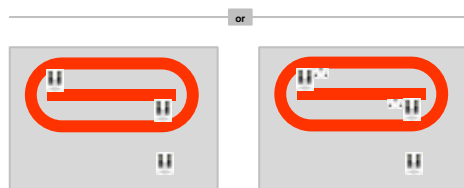


**200M**

3373.753



START / ASC	START / ASC
	START OUT 1
	START OUT 2
CELL 1500M	CELL 60M
	CELL 200M
SCB	SCB
TEL	TEL



3373.971  
Fix cabling  
3x 3373.701

3373.973  
Fix cabling & mobile boxes  
3x 3373.701 + 1x 3373.751 + 1x 3373.753

3373.xxx	Sets	
	.971	.975
.701	3	3
.751		1
.753		1

**TIMING ROOM**

xxxx.xxx Sales item number  
(Includes Technical item(s))

xxxx.xxx Technical item number  
(included in Sales item number)

- ⚡ AC power (115-230VAC) requested  
(cable provided) UPS recommended
- ⚡ Device working on battery  
AC power (115-230VAC) recommended (cable provided)

- Mobile cable
- - - Mobile cable (option)
- ..... Fix cable

Drawn by	HOEPAS	01.02.2018	ATHLETICS INDOOR Fix cabling - 
Checked by	PROJET	20.03.2018	
Modified by	HOEPAS	18.04.2018	
File Number	0017.551.vsd		
			Rev. Page <b>A</b> 3 / 7

**A** First official version  
 HOEPAS / 18.04.2018

**B** -

**C** -

**D** -

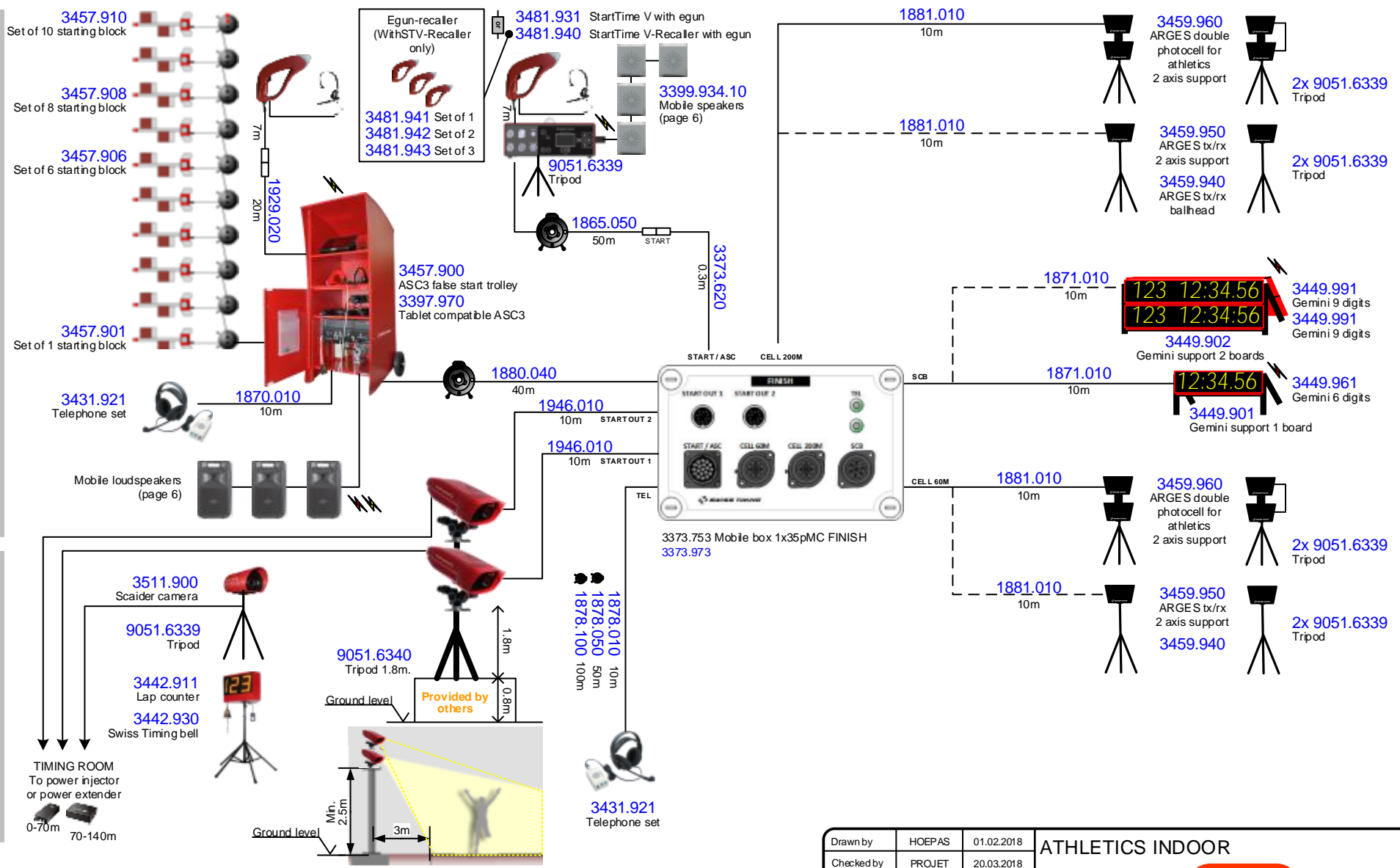
**START & FALSE START 400M**

**FINISH**

**PHOTOCELL 200M**

**SCOREBOARD**

**PHOTOCELL 60M**



xxxx.xxx Sales item number  
 (Includes Technical item(s))

xxxx.xxx Technical item number  
 (included in Sales item number)

⚡ AC power (115-230VAC) requested  
 (cable provided) UPS recommended

⚡ Device working on battery  
 AC power (115-230VAC) recommended (cable provided)

— Mobile cable

- - - Mobile cable (option)

..... Fix cable

Drawn by	HOEPAS	01.02.2018
Checked by	PROJET	20.03.2018
Modified by	HOEPAS	18.04.2018
File Number	0017.551.vsd	

**ATHLETICS INDOOR**

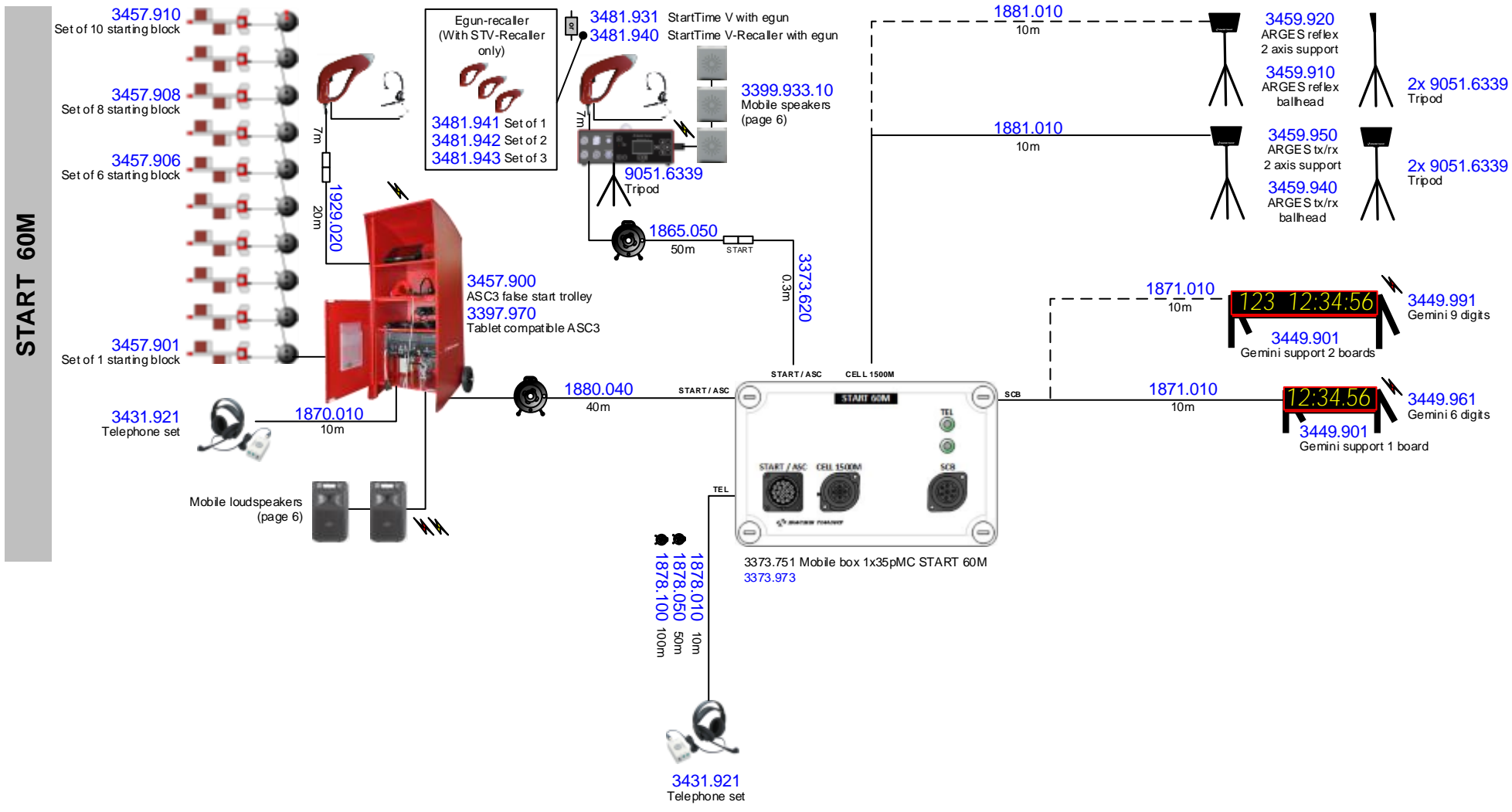
SWISS TIMING	-	0017.551	Rev. A	Page 4 / 7
--------------	---	----------	--------	------------

A	B	C	D
First official version HOEPAS / 18.04.2018	-	-	-

**START 60M**

**PHOTOCELL 1500M**

**SCOREBOARD**



xxxx.xxx Sales item number  
 (Includes Technical item(s))  
 xxxx.xxx Technical item number  
 (included in Sales item number)

AC power (115-230VAC) requested  
 (cable provided) UPS recommended  
 Device working on battery  
 AC power (115-230VAC) recommended (cable provided)

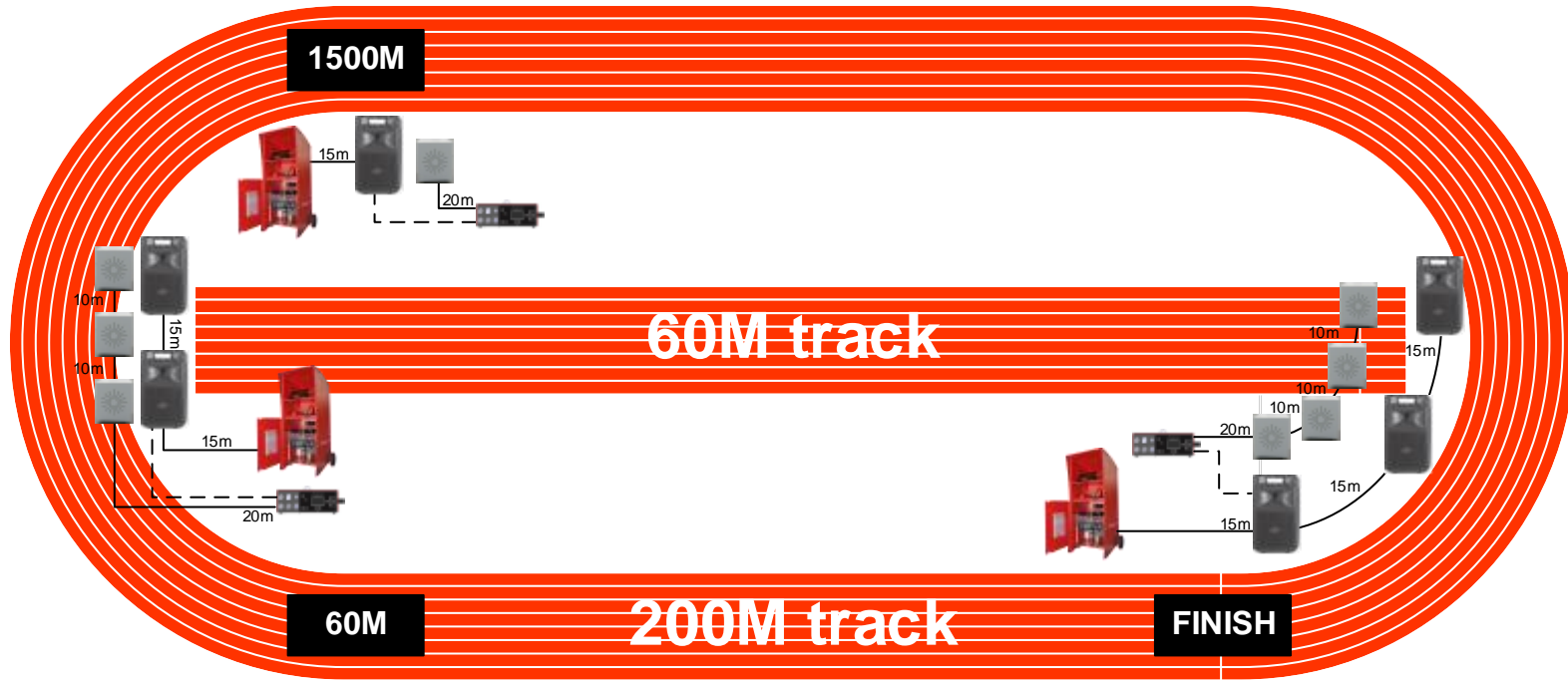
— Mobile cable  
 - - - Mobile cable (option)  
 ..... Fix cable



Drawn by	HOEPAS	01.02.2018	ATHLETICS INDOOR		
Checked by	PROJET	20.03.2018			
Modified by	HOEPAS	18.04.2018	<b>60M</b>		
File Number	0017.551.vsd				
			-	<b>0017.551</b>	Rev. <b>A</b> Page 5 / 7

SWISS TIMING LTD  
 INTELLECTUAL PROPERTY OF SWISS TIMING LTD. All rights reserved especially those of reproduction and distribution to third parties. Subject to change without notice.



Model: Dessin: A4H.vst

A	First official version HOEPAS / 18.04.2018	C	D
---	---	---	---





<b>Recommended -</b> Portable loudspeakers powered by battery & AC Rated power output 200W dynamic, Max SPL 120 dB Frequency response 65hz – 16kHz Input & output line level, balanced, XLR	START	 <b>Provided by others</b>	or 	3399.730 Mobile loudspeaker (serial cabling) 3399.632 Cable - 20m 1849.010 Cable - 10m
	<b>60M</b>	-	2x Loudspeakers with cables	<a href="#">3399.933.10</a> 3x Mobile speakers with cables
	<b>200M</b>	-	3x Loudspeakers with cables	<a href="#">3399.934.10</a> 4x Mobile speakers with cables
	<b>1500M</b>	-	1x Loudspeakers with cables	<a href="#">3399.931.10</a> 1x Mobile speakers with cables

xxxx.xxx Sales item number  
 (Includes Technical item(s))  
 xxxx.xxx Technical item number  
 (included in Sales item number)

 AC power (115-230VAC) requested  
 (cable provided) UPS recommended  
 Device working on battery  
 AC power (115-230VAC) recommended (cable provided)

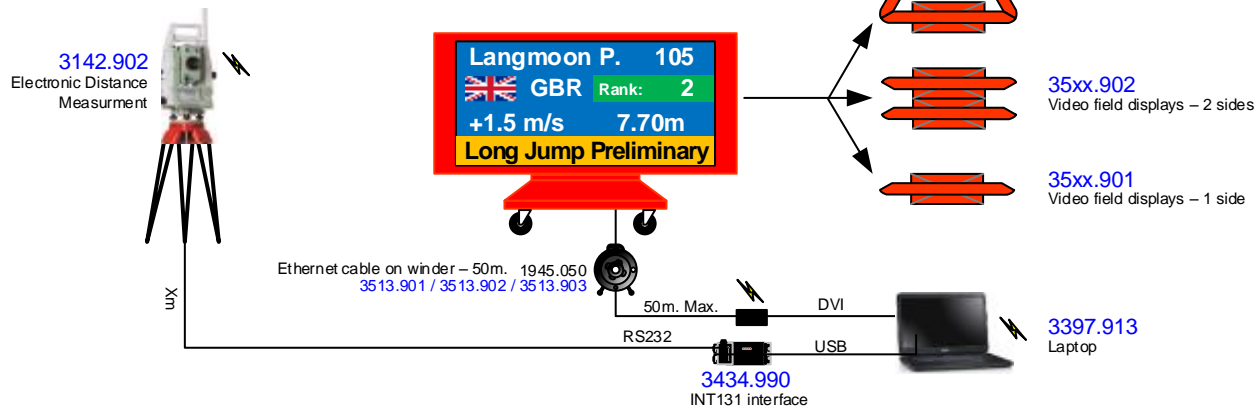
— Mobile cable  
 - - - Mobile cable (option)  
 ..... Fix cable

Drawn by	HOEPAS	01.02.2018	ATHLETICS INDOOR <b>LOUD SPEAKERS</b> 
Checked by	PROJET	20.03.2018	
Modified by	HOEPAS	18.04.2018	
File Number	0017.551.vsd		
			-
			<b>0017.551</b>
			Rev. <b>A</b> Page 6 / 7

A	First official version HOEPAS / 18.04.2018	B	C	D
---	---	---	---	---

	Concentration	Distance
High Jump	✔	
Long Jump	✔	✔
Triple Jump	✔	✔
Shot Put	✔	✔
Pole Vault	✔	

### Distance



### High Jump, Shot Put, Pole Vault

60

Concentration clock

3406.920  
Listo 920

9051.6339  
Tripod

xxxx.xxx Sales item number  
 (Includes Technical item(s))

xxxx.xxx Technical item number  
 (included in Sales item number)

AC power (115-230VAC) requested  
 (cable provided) UPS recommended

Device working on battery  
 AC power (115-230VAC) recommended (cable provided)

— Mobile cable  
 - - - Mobile cable (option)  
 ······ Fix cable

Drawn by	HOEPAS	01.02.2018	ATHLETICS INDOOR	<b>FIELD EVENT</b>	
Checked by	PROJET	20.03.2018			
Modified by	HOEPAS	18.04.2018			
File Number	0017.551.vsd				
			-	0017.551	Rev. <b>A</b> Page 7 / 7